



POINT STATUS LIGHTS PSL LED HELIDECK STATUS LIGHT SYSTEM

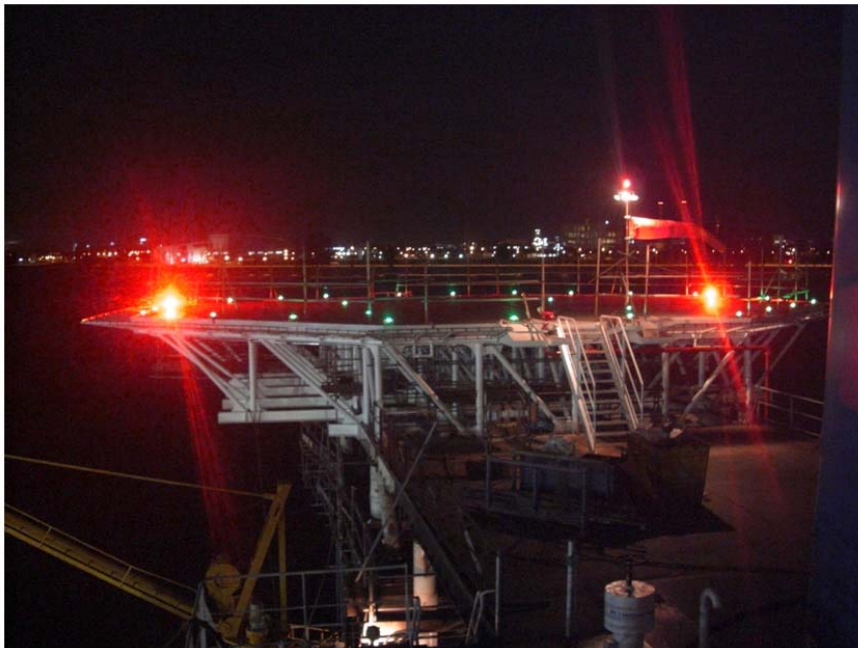
Compliances: ETL Listed to UL 1598 USA
 ETL Listed to CSA C22.2 No.250.0-04 Canada
 ETL Listed to UL 1598A Marine Vessels
 UK CAA CAP 437 Offshore Helideck Status Light System
 IMO 2009 MODU Code (2010) paragraph 13.5.26
 American Bureau of Shipping (ABS) Type Approved Product

The Status Light system consists of one or two PFB flashing red LED main status lights and the corresponding PRL-LSM reduced intensity status lights, visible from any direction of approach and on any landing heading. Additional PRL-LSM repeater lights may be placed at the helideck.

If a condition exists on an installation which may be hazardous for the helicopter or its occupants a visual warning system should be installed. The aeronautical meaning of the flashing red light is either *Do not land, aerodrome not available for landing or Move clear of landing area*. The system may be automatically initiated by means of a remote alarm signal (by others) as well as manual activation. All castings are aluminum, all hardware is stainless steel and the lens is glass. There is no plastic. All exterior metal beacon parts are treated for corrosion resistance that meets the US Military Standard Salt Fog Test conducted per MIL-STD-810E, Method 509.3, Procedure I.

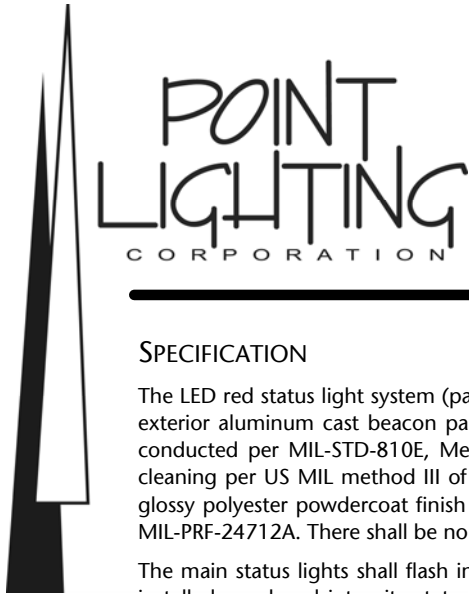
System	—	Color	—	Voltage	—	Options
PSL-35001		R: Red		1: 120 volts ±20%		2B: Two (2) Main Status Lights
				2: 220 volts ±20%		2R: Two (2) Repeater Lights
				4: 24 VDC		EX: Class I, Division 2 (lights only)
						EX2: Class I, Division 2 (system)

Consisting of a combination of lights as shown on page 3.



PSL SYSTEM UNDERGOING
COMMISSIONING TEST
IN SINGAPORE





POINT STATUS LIGHTS PSL LED HELIDECK STATUS LIGHT SYSTEM

SPECIFICATION

The LED red status light system (patents applied for in the U.S. and abroad) shall comply with UK CAA CAP 437. All exterior aluminum cast beacon parts shall be corrosion resistant and meet the US Military Standard Salt Fog Test conducted per MIL-STD-810E, Method 509.3, Procedure I. The fixture shall be treated for marine conditions by cleaning per US MIL method III of TT-C-490, chromate priming per US MIL-C-5541, epoxy powder base coat and glossy polyester powdercoat finish coat in color RAL 6003 (FED-STD-595 color #14097) green. Oven cured per US MIL-PRF-24712A. There shall be no exterior plastic parts; all shall be cast aluminum, glass and stainless steel.

The main status lights shall flash in sync if two or more are installed. For each main status light there shall also be installed a reduced intensity status light which will similarly synchronize flashing when in use. Additional repeater lights may be installed at the landing area and shall not exceed 150 mm in height. The repeater lights shall be at the reduced intensity level.

The system may be switched ON by a remote signal or manually. When ON, the system may be manually switched to reduced intensity. After 30 minutes, the system will automatically revert to normal intensity. Failure of any light will display as an alarm at the controller.

Intensity: Main Status Light	> 700 candelas
Flash Rate: Main Status Light	120 per minute
Intensity: Reduced Intensity Light	< 60 candelas
Flash Rate: Reduced Intensity Light	120 per minute
Wattage per Main Status Light:	70.2 watts Peak (AC & DC) 52.5 watts Average (AC & DC)
Volt-Amps:	110.4 VA (120V AC only)
Input Voltage Range:	93 to 144 volts (120V unit) 176 to 264 volts (220V unit)
Temperature Rating:	± 55° C
Main Light Mounting:	4 Holes on 13.25-inch dia circle (337 mm)
Reduced Light Mounting:	4 Holes on 9.75-inch dia circle (248 mm)

PATENT PENDING

POINT LIGHTING CORPORATION

Mail: P.O. Box 686, Simsbury, CT 06070
Tel 01 860.243.0600
email: Info@PointLighting.com

Plant: West Dudley Town Rd, Bloomfield, CT
USA
Fax 01 860.243.0665
website: www.PointLighting.com

POINT STATUS LIGHTS PSL LED

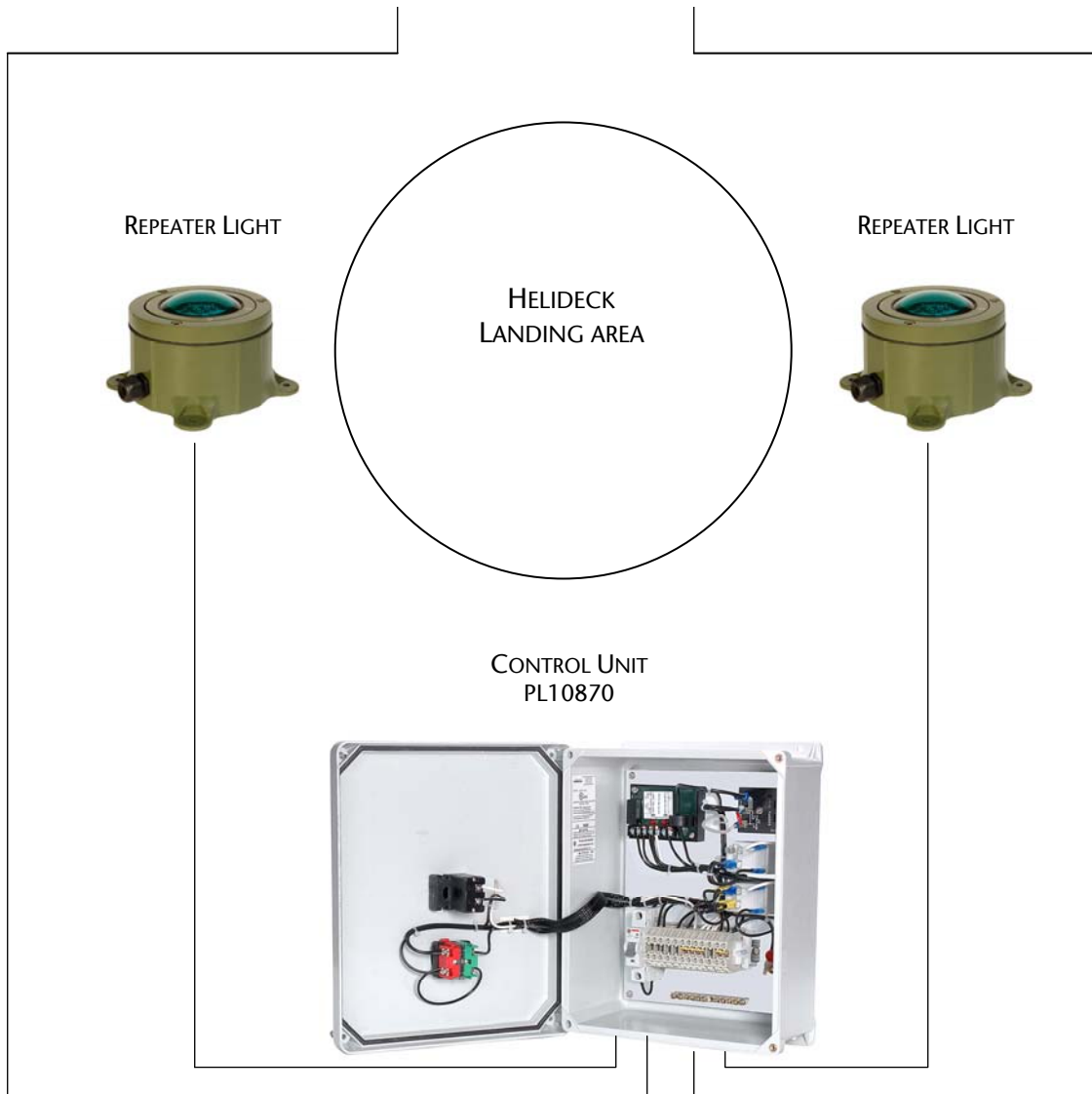
TYPICAL ARRANGEMENT

MAIN STATUS LIGHT
PORT SIDE
PFB-37001-R-X-SL

MAIN STATUS LIGHT
STARBOARD SIDE
PFB-37001-R-X-SL



PATENT PENDING



REPEATER LIGHT



HELIDECK
LANDING AREA

REPEATER LIGHT



CONTROL UNIT
PL10870

